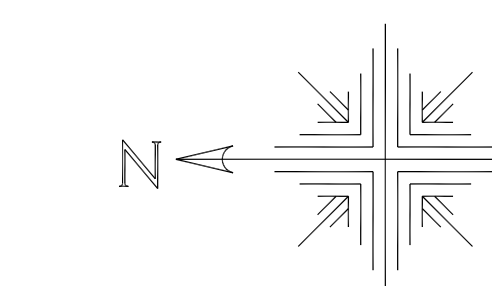


LOKALNA STUDIJA LOKACIJE

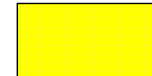
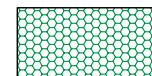
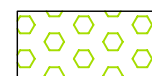






# "MLJEKAVICA"

RAZMJERA 1:1000  
POSTOJEĆE STANJE



LIST BROJ **3**

## ANALIZA POSTOJEĆEG STANJA

	KUĆIŠTA	788.41m <sup>2</sup>
	MASLINJACI	3 611.56 m <sup>2</sup>
	ŠUME	8 878.91 m <sup>2</sup>
	PAŠNJACI	34 410.53 m <sup>2</sup>
	PUTEVI I SLOBODNE POVRŠINE	4 717.80 m <sup>2</sup>
	VODENE POVRŠINE	1 549.67 m <sup>2</sup>
	NASIPI	7 769.49 m <sup>2</sup>
	TRASA VODOVODA	
	GRANICA ZAHVATA LOKACIJE "MLJEKAVICA"	

Obradivač:  
**INKOPLAN** d.o.o Podgorica  
inženjering, konsalting, planiranje  
2008. godina

Investitor:  
**Opština Budva**

