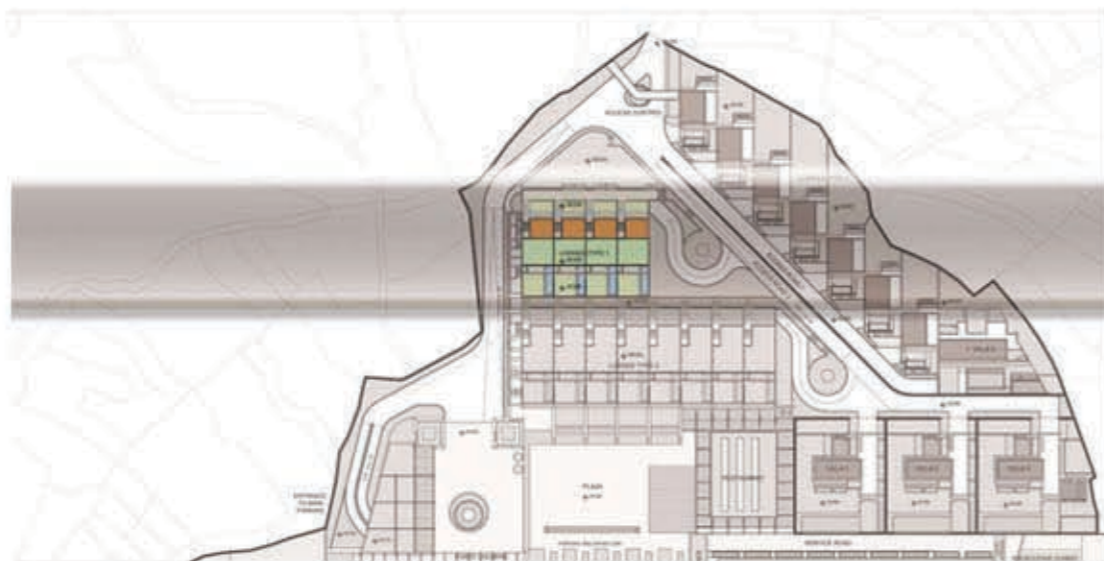


Urbanistički projekat

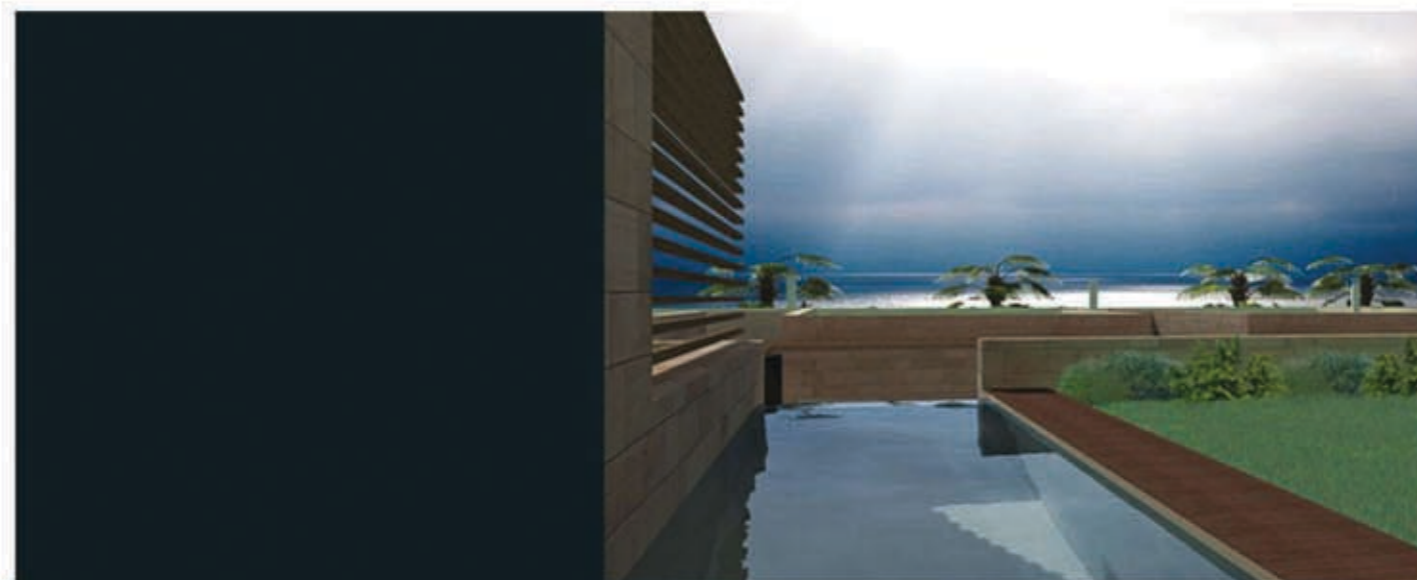
"Turističko naselje
Skočiđevojka /Budva"



UPPER LEVEL



LOWER LEVEL



GRAND LODGE TYPE 1
7 ROOMS
LIVING ROOM - 100m²
KITCHEN - 100m²
TOTAL AREA - 200m²

APARTMANI
UP1

/ 3D model

Investitor: Opština BUDVA

oktobar 2009.

obrađivač:

Montenegro

Urbanističko planiranje, projektovanje, konsalting,
inženjering, export-import, d.o.o.