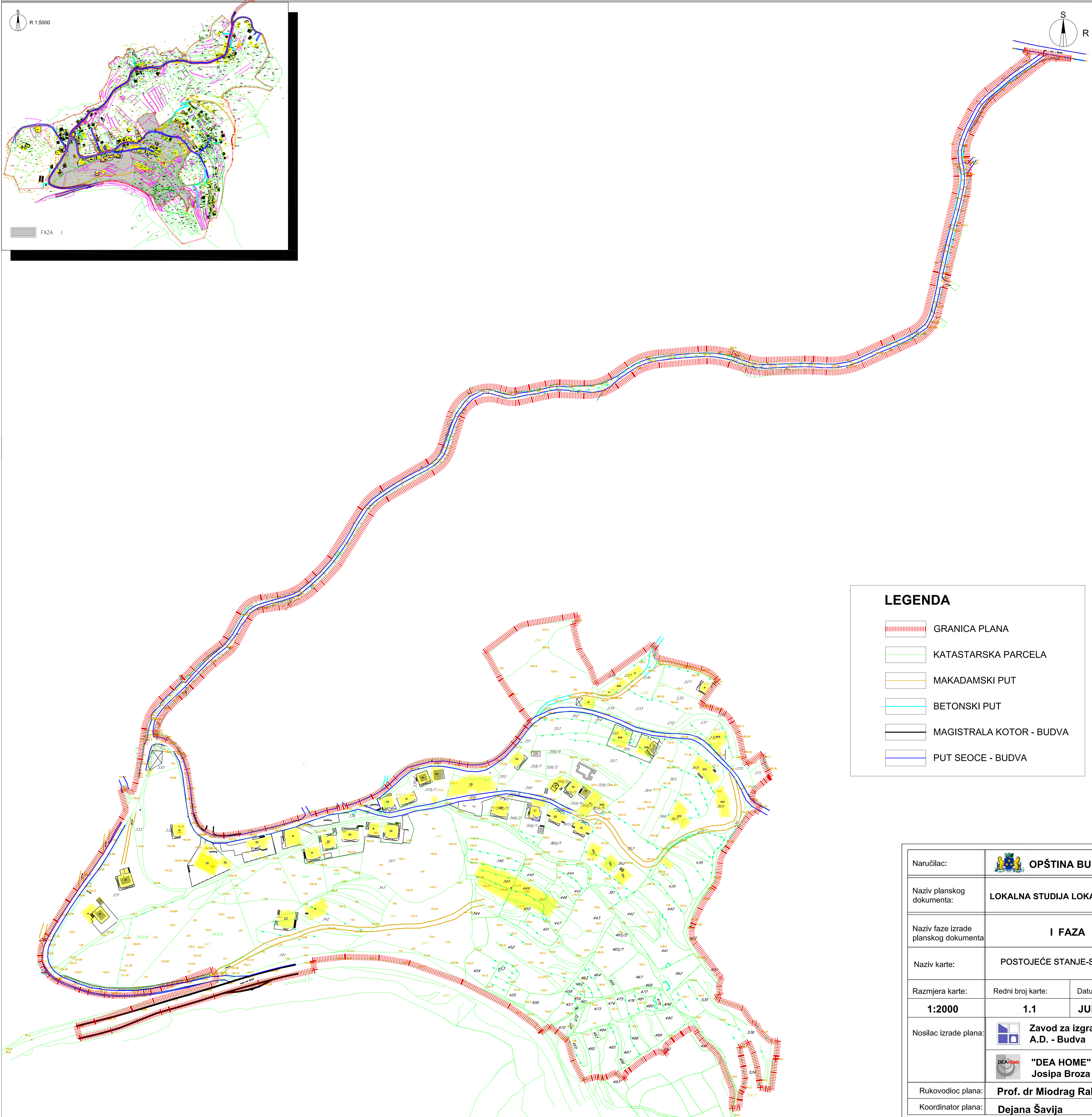



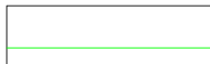




# POSTOJEĆE STANJE-SAOBRAĆAJ



R 1:2000



## LEGENDA

-  GRANICA PLANA
-  KATASTARSKA PARCELA
-  MAKADAMSKI PUT
-  BETONSKI PUT
-  MAGISTRALA KOTOR - BUDVA
-  PUT SEOCE - BUDVA

LOKALNA STUDIJA LOKACIJE "SEOCE" - I FAZA

Naručilac:	 <b>OPŠTINA BUDVA</b>	
Naziv planskog dokumenta:	<b>LOKALNA STUDIJA LOKACIJE "SEOCE"</b>	
Naziv faze izrade planskog dokumenta:	<b>I FAZA</b>	
Naziv karte:	POSTOJEĆE STANJE-SAOBRAĆAJ	
Razmjera karte:	Redni broj karte:	Datum:
<b>1:2000</b>	<b>1.1</b>	<b>JUL, 2012.</b>
Nosilac izrade plana:	 <b>Zavod za izgradnju "Budva" A.D. - Budva</b>  <b>"DEA HOME" Josipa Broza 57, Podgorica</b>	
Rukovodioc plana:	<b>Prof. dr Miodrag Ralević</b>	
Koordinator plana:	<b>Dejana Šavija</b>	