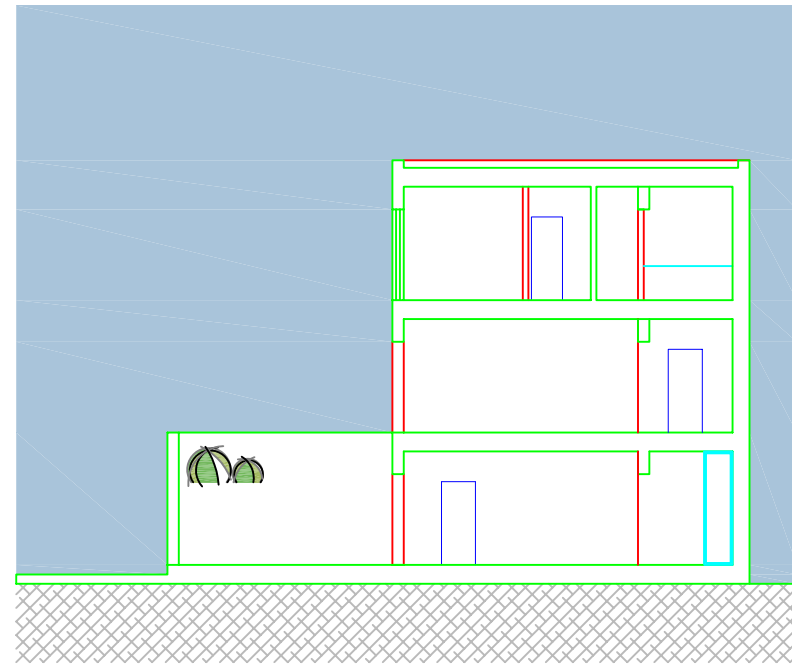
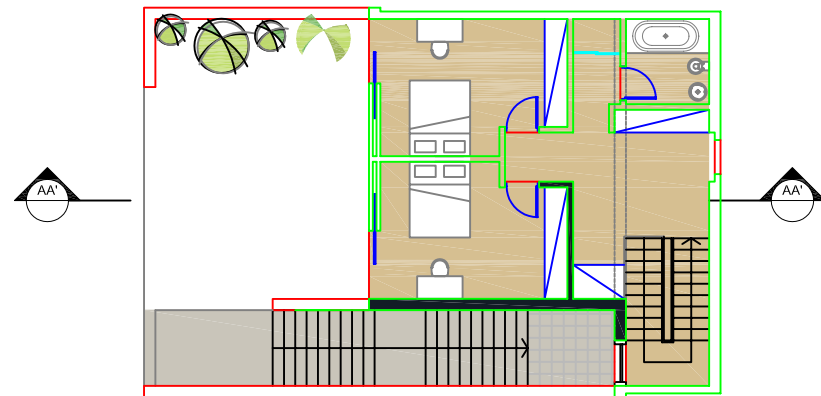


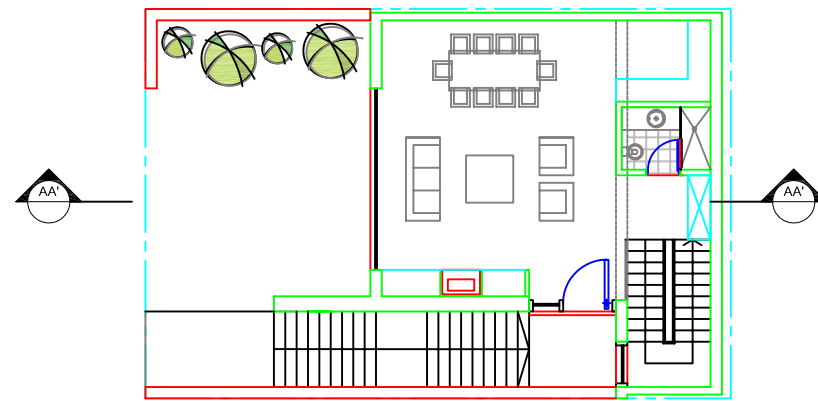
# Urbanistički projekat "Turističko naselje Skočiđevojka" / Budva



PRESJEK AA'

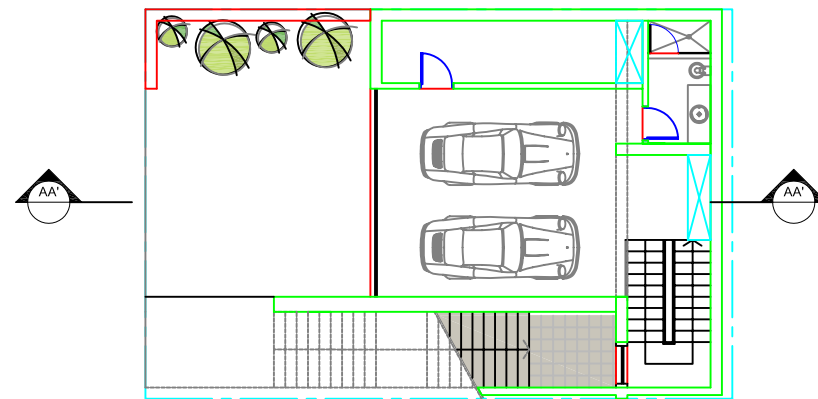


2 SPRAT



1 SPRAT

PRIZEMLJE	= 80 m <sup>2</sup>
1 SPRAT	= 80 m <sup>2</sup>
2 SPRAT	= 80 m <sup>2</sup>
UKUPNO	= 240 m <sup>2</sup>



PRIZEMLJE

**1b** VILA-TIP2/ osnove\_presjeci UP 3-54 razmjera: R 1:200

investitor: Opština BUDVA

oktobar 2009.

obrađivač:

**MONTENEGRO**

*Urbanističko planiranje, projektovanje, konsalting,  
inženjering, export-import, d.o.o.*