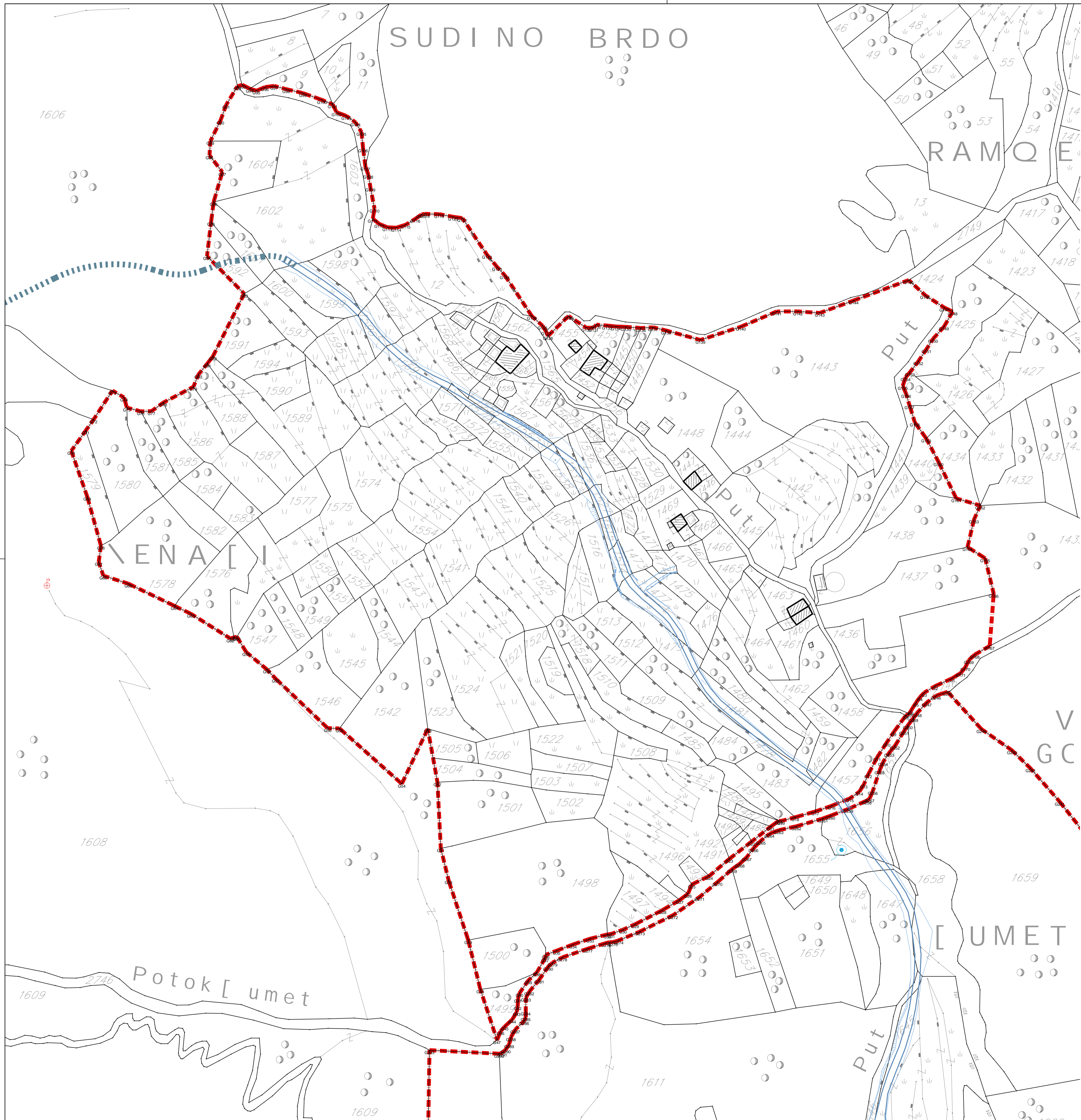


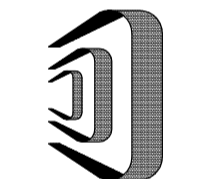


SUDINO BRDO



G1 6575339.97 4679513.38	G58 6574988.01 4679517.86	G115 6575059.27 4679746.18
G2 6575331.14 4679509.32	G59 6574977.40 4679526.79	G116 6575064.26 4679749.25
G3 6575325.45 4679505.92	G60 6574972.59 4679534.64	G117 6575067.42 4679751.46
G4 6575323.30 4679503.62	G61 6574971.14 4679534.38	G118 6575069.11 4679751.77
G5 6575321.31 4679500.86	G62 6574969.25 4679533.74	G119 6575076.48 4679751.61
G6 6575318.65 4679496.65	G63 6574948.99 4679546.45	G120 6575083.60 4679750.27
G7 6575317.80 4679495.19	G64 6574940.65 4679550.45	G121 6575088.35 4679749.60
G8 6575316.04 4679494.20	G65 6574916.84 4679561.92	G122 6575101.06 4679730.70
G9 6575309.78 4679485.64	G66 6574904.02 4679566.00	G123 6575106.19 4679724.51
G10 6575306.18 4679480.23	G67 6574901.65 4679573.08	G124 6575110.15 4679720.25
G11 6575301.32 4679472.71	G68 6574902.80 4679581.40	G125 6575124.04 4679699.30
G12 6575296.77 4679464.00	G69 6574895.78 4679606.54	G126 6575129.52 4679694.33
G13 6575294.47 4679458.78	G70 6574887.57 4679630.08	G127 6575131.32 4679691.43
G14 6575292.16 4679455.10	G71 6574895.01 4679640.51	G128 6575132.35 4679689.12
G15 6575287.38 4679451.69	G72 6574899.02 4679646.18	G129 6575142.88 4679699.33
G16 6575278.00 4679447.86	G73 6574908.69 4679661.01	G130 6575152.07 4679693.26
G17 6575269.62 4679444.95	G74 6574914.69 4679657.50	G131 6575155.77 4679693.33
G18 6575259.30 4679442.00	G75 6574916.11 4679652.31	G132 6575157.15 4679694.90
G19 6575251.99 4679440.09	G76 6574923.21 4679650.38	G133 6575162.66 4679694.41
G20 6575250.89 4679440.22	G77 6574928.75 4679650.48	G134 6575167.19 4679693.97
G21 6575246.75 4679437.25	G78 6574934.83 4679654.88	G135 6575172.32 4679693.74
G22 6575236.82 4679429.47	G79 6574950.30 4679663.01	G136 6575180.06 4679693.16
G23 6575225.44 4679420.62	G80 6574952.79 4679669.23	G137 6575186.23 4679693.54
G24 6575215.07 4679411.80	G81 6574957.44 4679674.95	G138 6575193.06 4679691.85
G25 6575206.14 4679407.47	G82 6574960.31 4679678.65	G139 6575210.62 4679687.02
G26 6575204.22 4679402.71	G83 6574976.35 4679710.76	G140 6575231.43 4679693.87
G27 6575199.98 4679399.52	G84 6574957.27 4679730.08	G141 6575249.74 4679701.63
G28 6575191.22 4679394.38	G85 6574959.35 4679747.61	G142 6575260.66 4679701.69
G29 6575177.08 4679387.05	G86 6574960.65 4679757.87	G143 6575271.90 4679700.91
G30 6575170.84 4679384.28	G87 6574965.12 4679773.24	G144 6575289.34 4679707.33
G31 6575164.77 4679382.06	G88 6574958.54 4679781.83	G145 6575317.52 4679717.78
G32 6575162.85 4679381.83	G89 6574958.98 4679789.12	G146 6575325.93 4679710.04
G33 6575153.98 4679379.65	G90 6574964.16 4679799.64	G147 6575335.86 4679703.60
G34 6575145.14 4679376.66	G91 6574967.10 4679807.74	G148 6575340.10 4679701.80
G35 6575136.77 4679373.51	G92 6574972.90 4679817.28	G149 6575335.66 4679693.91
G36 6575131.16 4679371.36	G93 6574975.34 4679818.04	G150 6575330.06 4679687.64
G37 6575130.82 4679369.59	G94 6574979.17 4679816.04	G151 6575326.67 4679682.36
G38 6575126.56 4679362.26	G95 6574982.65 4679815.03	G152 6575322.48 4679676.07
G39 6575122.21 4679358.17	G96 6574986.97 4679816.84	G153 6575318.46 4679670.46
G40 6575117.70 4679351.72	G97 6574991.72 4679817.47	G154 6575315.95 4679667.87
G41 6575116.93 4679349.78	G98 6574997.90 4679815.79	G155 6575314.48 4679663.40
G42 6575116.80 4679345.07	G99 6575006.47 4679813.77	G156 6575316.24 4679659.34
G43 6575116.29 4679342.00	G100 6575016.32 4679810.26	G157 6575317.92 4679653.43
G44 6575113.99 4679338.16	G101 6575021.79 4679807.98	G158 6575320.70 4679644.66
G45 6575110.15 4679334.58	G102 6575023.79 4679803.93	G159 6575326.55 4679636.43
G46 6575107.97 4679332.14	G103 6575028.82 4679802.05	G160 6575332.88 4679624.31
G47 6575106.18 4679327.54	G104 6575033.54 4679798.75	G161 6575341.96 4679605.70
G48 6575107.69 4679323.61	G105 6575037.90 4679793.75	G162 6575354.24 4679592.05
G49 6575091.37 4679318.91	G106 6575037.40 4679785.31	G163 6575351.05 4679594.83
G50 6575081.27 4679310.65	G107 6575038.59 4679775.99	G164 6575347.73 4679580.70
G51 6575077.28 4679306.04	G108 6575040.11 4679771.85	G165 6575356.78 4679574.96
G52 6575075.56 4679303.98	G109 6575041.19 4679765.17	G166 6575361.17 4679565.69
G53 6575070.62 4679300.40	G110 6575043.27 4679754.40	G167 6575369.11 4679552.91
G54 6575067.26 4679295.16	G111 6575042.37 4679748.28	G168 6575365.14 4679545.45
G55 6575065.30 4679291.60	G112 6575045.75 4679746.57	G169 6575348.42 4679522.69
G56 6575019.21 4679487.75	G113 6575049.90 4679744.88	G170 6575346.64 4679519.06
G57 6574992.56 4679513.07	G114 6575054.51 4679744.65	G171 6575344.27 4679516.07

 GRANICA STUDIJA LOKACIJE
 G1 G2 G3 KOORDINATNE TAČKE



DELPROJEKT
d.o.o. BUDVA

INVESTITOR

OPŠTINA BUDVA
Opštinska agencija za planiranje prostora

OBRAĐIVAČ

DEL PROJEKT
d.o.o. Budva

LOKALNA STUDIJA LOKACIJE

ČESMINOVO

POSTOJEĆE STANJE

CRTEZ

GEODETSKA PODLOGA, GRANICA ZAHVATA I KOORDINATNE TAČKE

RAZMERA

1:1000

LIST BR.

02

DATUM

03. 2009